

DUJOUR

DUJOUR.COM

SPRING 2021

THE GENIUS OF
**CYNTHIA
ERIVO**



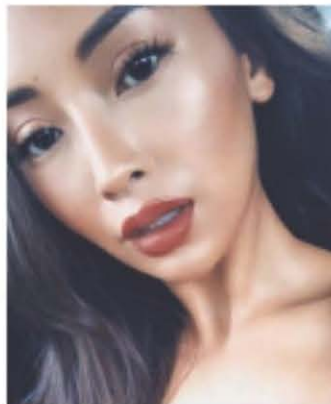
CONTRIBUTORS



DOUGLAS FRIEDMAN
PHOTOGRAPHER

("On the Lakefront," page 76)

Celebrated interiors photographer Douglas Friedman met interior designer Sasha Adler through friends in Chicago. Years later, they reunited on the occasion of photographing this stunning Chicago apartment for *DuJour*. "I love spaces that are steeped in tradition," says Friedman. "I grew up in a pre-war building and I have a nostalgic connection to the form, to the idea. A grand old space that stood the test of time and continues to flourish generation after generation. This one has been so beautifully ushered into today while respecting the intentions of the original builders."



ALEX T
MAKEUP ARTIST

("Game On," page 100)

Alex T is a makeup artist whose work has been featured in *Vogue*, *Esquire*, *Elle*, and *Harper's Bazaar*. For this issue, she traveled to Asbury Park, New Jersey, for a fashion shoot with Jason Lasswell. "There's always a slight nervousness when I am working with a crew I have never worked with before at a place I am not familiar with in inclement weather," says the makeup artist. "But I was immensely gratified by the end result of beautiful images, new experiences and warm-hearted people."



JEFFREY WESTBROOK
PHOTOGRAPHER

("It's Only Natural," page 26 and "Rock Candy," page 88)

Jeffrey Westbrook is a New York-based still life photographer who draws inspiration from his love of design, engineering and motorsports. When he's not on set, he can be found underneath one of his car projects or riding dirt bikes.

"This jewelry shoot was a real standout," says Westbrook of one of the stories he shot for this issue.

"The pieces were gorgeous and the concept was brilliant. One of those shoots that reminds me why I love taking pictures!"



EDWARD ESPITIA
WRITER

(Artifact, page 144)

Edward Espitia's background in fashion and art history was a perfect fit for this issue's Artifact feature about Empress Josephine's jewelry. His popular Instagram account, @DefunctFashion, delves into the archives of fashion history and is followed by many of fashion's biggest names.



JONATHAN SOROFF
WRITER

("Northern Exposure," page 58)

Massachusetts native and resident Jonathan Soroff is a contributing editor at *Boston Magazine*. For this issue, he had the difficult task of writing about two decadent and remote properties: Twin Farms and Fogo Island Inn. "Twin Farms is the ultimate in pampering luxury, from the accommodations to the food to the service to the design and artwork," says Soroff. "It is a work of art unto itself. So is Fogo Island Inn, except that it exists on the edge of nowhere, a thoroughly surprising and exotic place in a region time seems to have forgotten."

WHERE TO GO NOW

Northern Exposure

This spring, head to off-the-beaten-path resorts for unparalleled pampering and adventure

BY JONATHAN SOROFF

When searching for the ideal spring break, people instinctively look south, toward palm trees and talcum powder beaches. However, two of the most romantic escapes in the Western Hemisphere are actually situated up north and offer a level of gastronomy, pampering, scenery and excitement that surpass anything you'll find on Worth Avenue, with the added benefit of built-in social distancing. Twin Farms, in Barnard, Vermont, is a Relais & Châteaux property that defines a new level of luxury and sophistication, while Fogo Island Inn, located off the northern tip of Newfoundland, operates as a nonprofit but offers unparalleled comfort and solitude in one of the most remote, breathtaking corners of the world.

[Editor's note: As of press time, Atlantic Canada is still closed to foreign visitors due to COVID-19, but a representative of the tourism board hopes that it will open up by late spring.]

TWIN FARMS

Our idea of a perfect getaway is maximum privacy in a magnificent setting while getting everything you want before you even know you want it. Twin Farms, a 300-acre, adults-only, all-inclusive retreat in Barnard, Vermont, boasts 20 unique accommodations originally designed by the late famed decorator Jed Johnson. Cottages range from a trout-themed Adirondack-style hideaway to an Arabian Nights, tented-ceiling folly, and the art on the walls is museum-quality, so you might well find a David Hockney or Roy Lichtenstein hanging over your bed. The main inn, where cocktails and meals are served, is a 1794 farmhouse that was once the weekend getaway of famed author Sinclair Lewis. Chef Nathan Rich performs magic with local, seasonal ingredients, and menus can be tailored to each guest's individual preferences. He'll also happily pack a picnic lunch or deliver it to your room. Going for a hike? Tell him your destination, and he'll have it waiting at the spot with a superb white wine, perfectly chilled, from the inn's 15,000-bottle cellar. From martinis on your screened-in porch to Champagne and croquet on the lawn, bee-keeping tours of the resident apiary or fly-fishing instruction on the private pond, it's as if the staff can't dream up enough ways to spoil the guests. The inn's activities run the gamut from canoeing or skating on Copper Pond to downhill skiing on its private slopes (no lift lines!), cross-country skiing, snow-shoeing, hiking, biking, tennis and more. A traditional Japanese furo (soaking tub) and a



FROM LEFT: A lamb roulade dish at Twin Farms; the Barn cottage



top-notch spa offer a balm to the body, while the pristine views of quintessential Vermont scenery offer a balm to the soul. One of Twin Farms' signature touches is a large selection of Stave puzzles: diabolically difficult, hand-cut jigsaws that come in

boxes without a photo to guide you and will keep you delightfully flummoxed throughout your stay. Should you decide to leave the property, it's an easy (downhill) bike ride to Woodstock, one of Vermont's most picturesque and charming towns, with galleries, book shops and a classic general store dating to 1886—F.H. Gillingham & Sons. The town green and covered bridge are as iconically New England as it gets, while a visit to Billings Farm and Museum offers a glimpse into the state's famed dairy industry. One of the principal reasons Woodstock resembles a 19th-century postcard is that longtime resident Laurance Rockefeller paid to have the utilities buried underground, so there isn't a telephone pole or electric wire in sight. Rockefeller's homestead, which is open for tours, has magnificent gardens and an important collection of paintings from the Hudson River School. Slightly farther afield is the quaint town of Quechee, home of the Simon Pearce factory, where you can enjoy a delicious lunch overlooking a waterfall and watch glass-blowers creating masterpieces. However, there really isn't any reason to leave Twin Farms, where you can sit outside in solitude, sipping your adult beverage of choice and basking in the moonlight in Vermont. twinfarms.com



FROM LEFT: The Newfoundland room at Fogo Island Inn; the dining room